

## Windows XP: WPA2 Wireless Network Setup for Students

### *Connect to Wesley\_Student*

**\*STOP! READ THIS FIRST – In order to setup this connection on Windows XP, you MUST be running Windows XP Service Pack 3 or it will not work. To obtain the free download from Microsoft of Service Pack 3 click the link below.**  
<http://www.microsoft.com/download/en/details.aspx?id=24>

Open Network Connections

1. Click Start → Control Panel → Double-click **Network Connections** → Right-click **Wireless Network Connection**, and then select **Properties**.
2. In the **Wireless Network Connection Properties** window **Left Click** the tab called **Wireless Networks**.

The window will look just like Fig. 2.

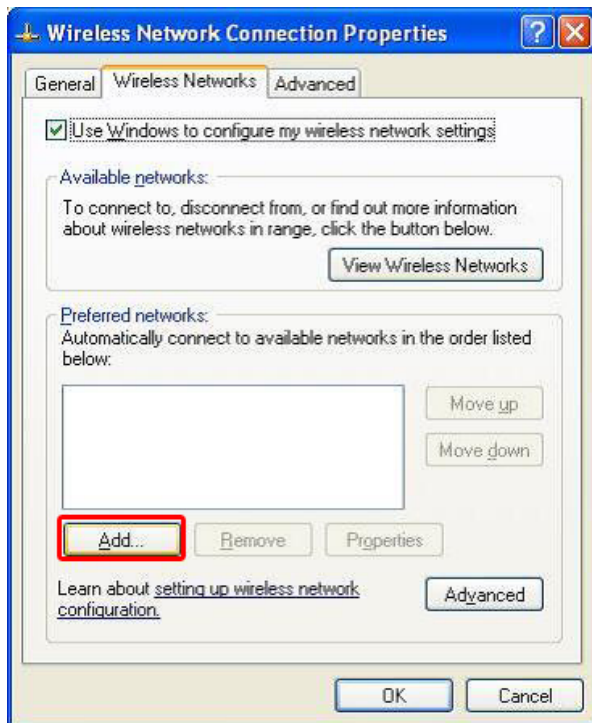


Fig. 2

3. Click the **Add... Button** highlighted in **Red** in Fig. 2
4. In the **Wireless network properties** window fill in the following information:

**Network name (SSID)** is Wesley\_Student.  
**Network Authentication** is WPA2  
**Data encryption** is set to AES.

The window will look just like Fig. 3.

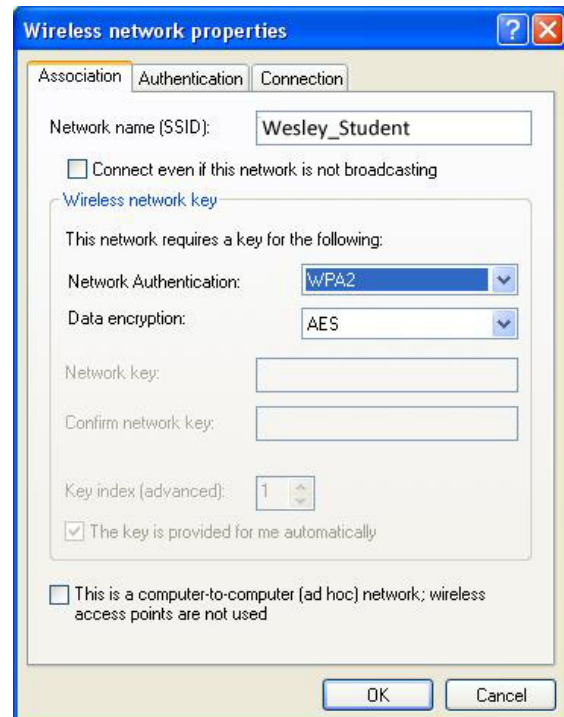


Fig. 3

5. **Left Click the Authentication Tab** and select the following:

**EAP Type** is Protected EAP (PEAP)

6. **Uncheck Authenticate as computer when computer information is available**

Your window should look just like Fig. 4.

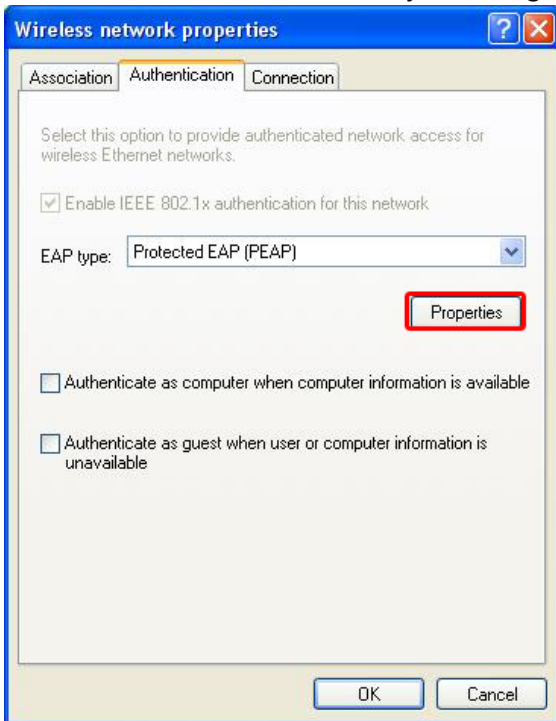


Fig. 4

7. **Left Click the Properties Box** highlighted in Red in Fig. 4.
8. In the **Protected EAP Properties Box** enter the following information: Un-Check **Validate server certificate** and **Connect to these servers**. Make sure that Secured password (EAP-MSCHAP v2) is selected in the Select Authentication Method list.

Your window will look just like Fig. 5

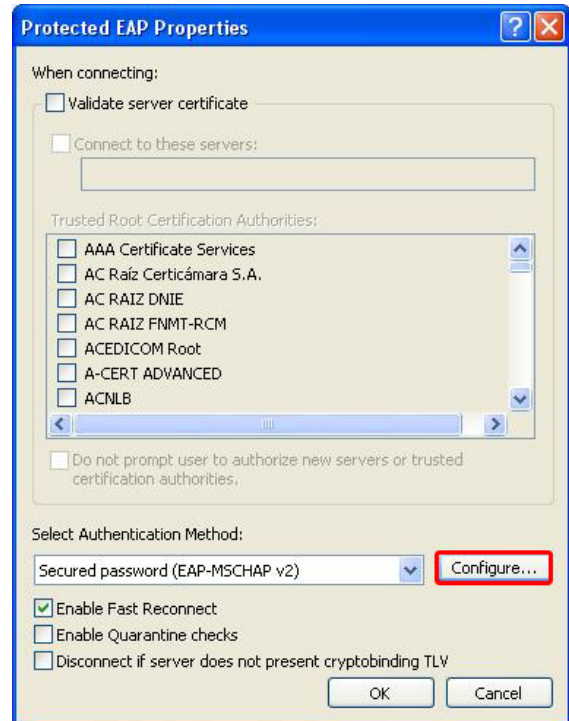


Fig. 5

9. Click the **Configure** button highlighted in Red in Fig. 5.
10. In the **EAP MSCHAP v2 Properties window** uncheck the box **Automatically use my...** as seen in Fig. 6 below.



Fig. 6

11. **Left Click OK** until you see the **Network Connections Window**.

12. A **Wireless Network Connection** bubble will show up in the Right-hand corner of your screen as seen in Fig. 7. **Left Click** this **bubble**.



**Fig. 7**

13. Enter your **Wesley Student Email Address** (without the “@email.wesley.edu”) and **Password**, leave **Logon domain** blank as seen in Fig 8.



**Fig. 8**

14. You will now be **connected**.