

Windows XP: WPA2 Wireless Network Setup

Connect to Wesley_FS

***STOP! READ THIS FIRST – In order to setup this connection on Windows XP, you MUST be running Windows XP Service Pack 3 or it will not work. To obtain the free download from Microsoft of Service Pack 3 click the link below.**
<http://www.microsoft.com/download/en/details.aspx?id=24>

1. Open Network Connections

Right Click any of your networking icons in your task bar and **Left Click Open Network Connections** as seen in Fig.1

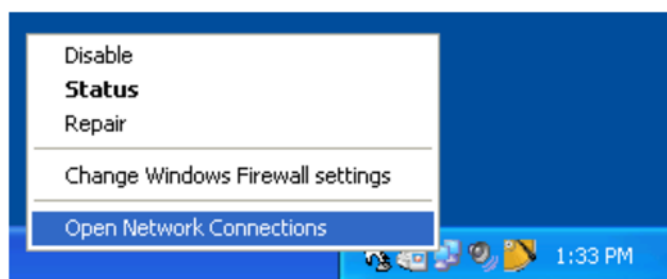


Fig. 1

2. **Right Click** your **Wireless Network Connection** and then **Left Click Properties**
3. In the **Wireless Network Connection Properties** window **Left Click** the tab called **Wireless Networks**.

The window will look just like Fig. 2.

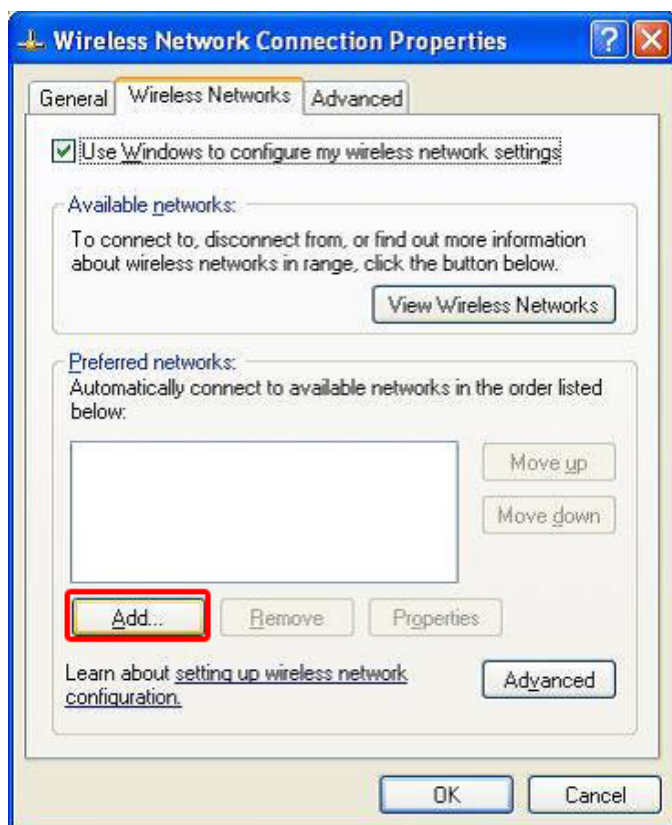


Fig. 2

4. Click the **Add... Button** highlighted in **Red** in Fig. 2
5. In the **Wireless network properties** window fill in the following information:

Network name (SSID) is Wesley_FS.
Network Authentication is WPA2
Data encryption is set to AES.

The window will look just like Fig. 3.

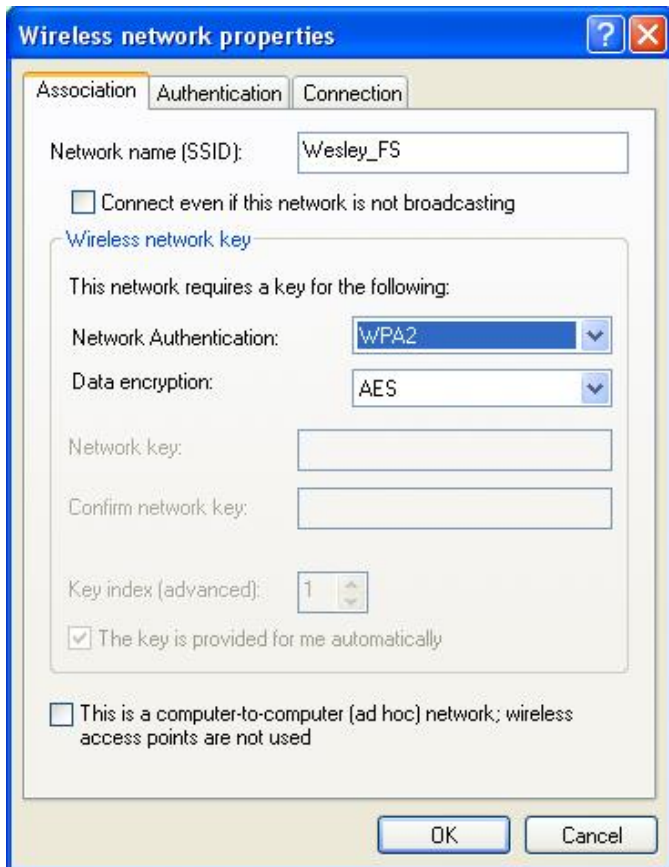


Fig. 3

6. **Left Click the Authentication Tab** and select the following:

EAP Type is Protected EAP (PEAP)

7. Uncheck **Authenticate as computer when computer information is available**

Your window should look just like Fig. 4.

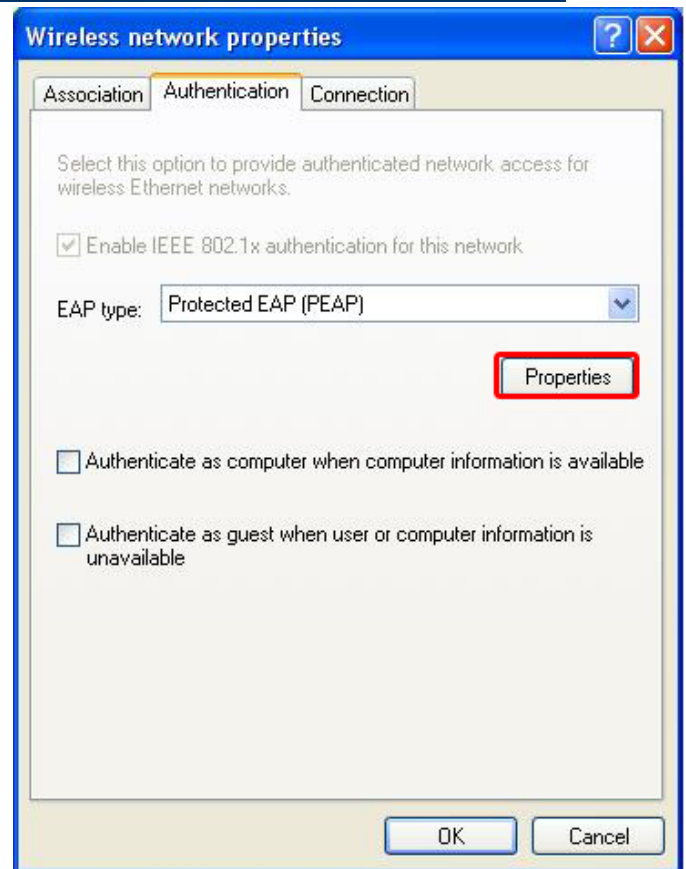


Fig. 4

8. **Left Click the Properties Box** highlighted in Red in Fig. 4.
9. In the **Protected EAP Properties Box** enter the following information:
 - Un-Check **Validate server certificate** and **Connect to these servers**.
 - Make sure that Secured password (EAP-MSCHAP v2) is selected in the Select Authentication Method list.

Your window will look just like Fig. 5

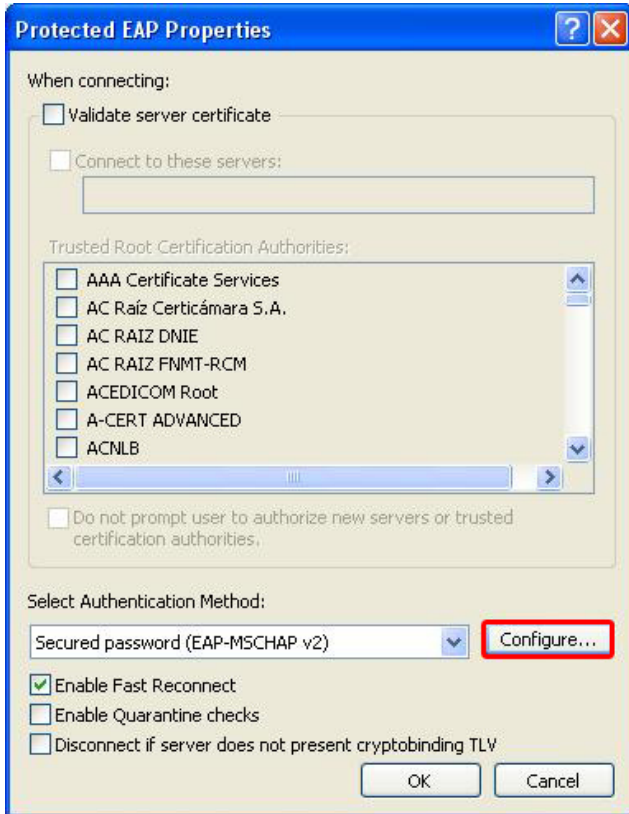


Fig. 5

10. Click the **Configure** button highlighted in **Red** in Fig. 5.
11. In the **EAP MSCHAP v2 Properties** window uncheck the box **Automatically use my...** as seen in Fig. 6 below.



Fig. 6

12. **Left Click OK** until you see the **Network Connections Window**.

13. A **Wireless Network Connection** bubble will show up in the Right-hand corner of your screen as seen in Fig. 7. **Left Click** this **bubble**.



Fig. 7

14. Enter your **Username (Wesley Username)** and **Password**, leave **Logon domain** blank as seen in Fig 8.



Fig. 8

15. You will now be **connected**.