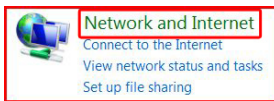


### Windows Vista: WPA2 Wireless Network Setup for Faculty & Staff

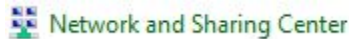
#### Create a New Wireless Network

1. Make sure your wireless adapter is enabled on your laptop.
2. Click the "Start" menu, and select "Control Panel."
3. Click on "Network and Internet" icon (Fig. 1)



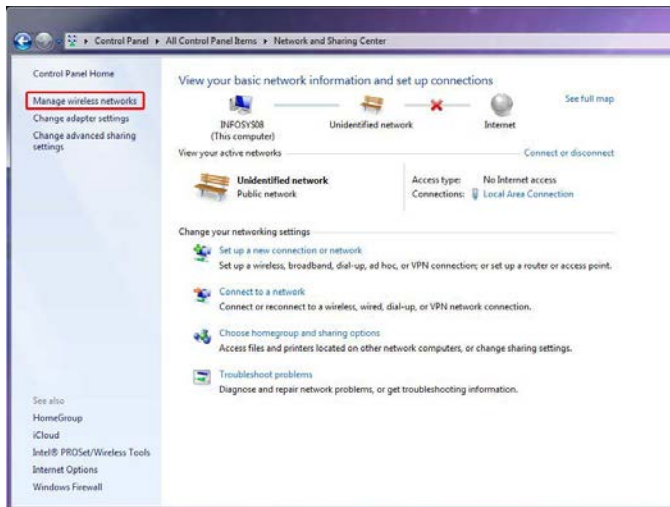
**Fig. 1**

4. Click on "Network and Sharing Center (Fig. 2)



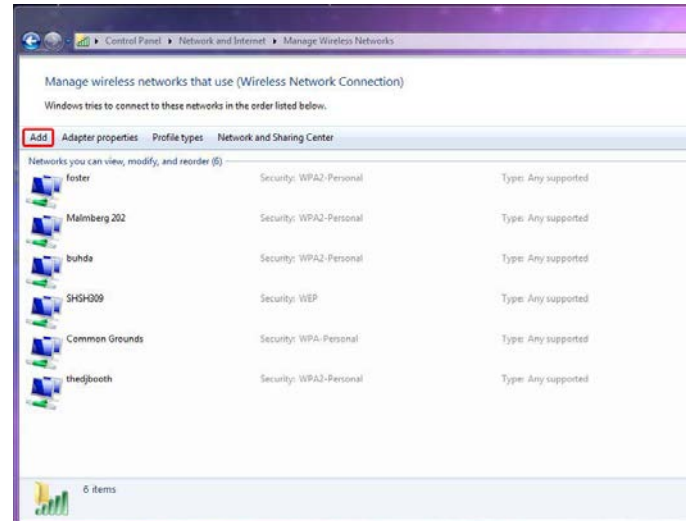
**Fig. 2**

5. Click "Manage wireless networks" (located on the left side of the window). (Fig. 3)



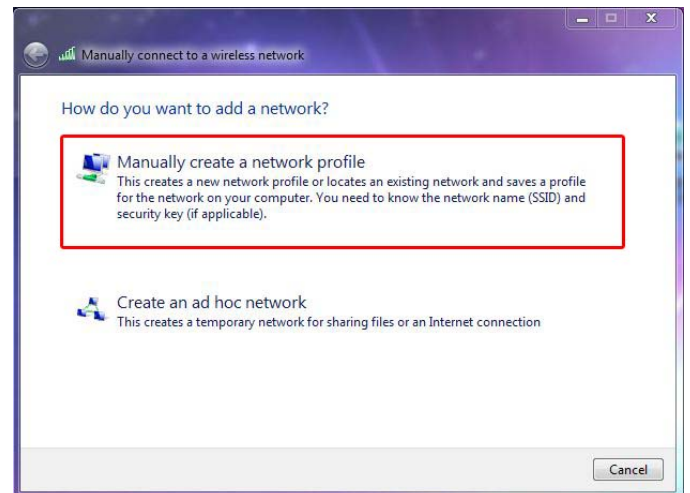
**Fig. 3**

6. Click "Add." (Fig. 4)



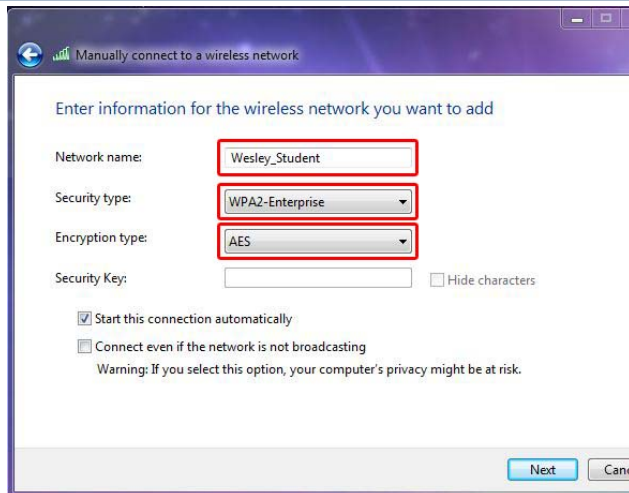
**Fig. 4**

7. Select "Manually create a network profile." (Fig. 5)

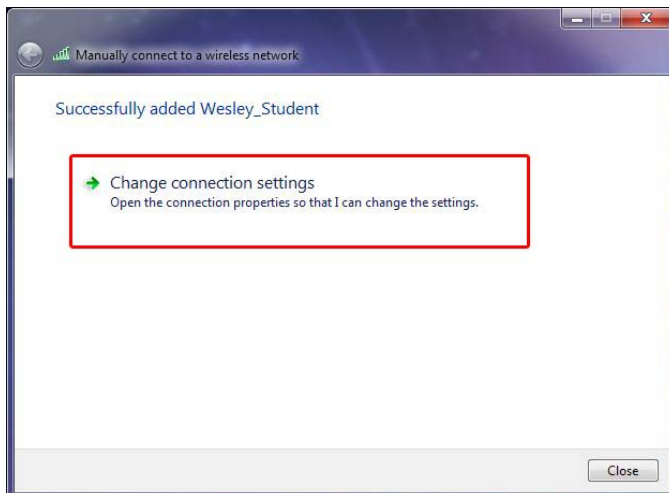


**Fig. 5**

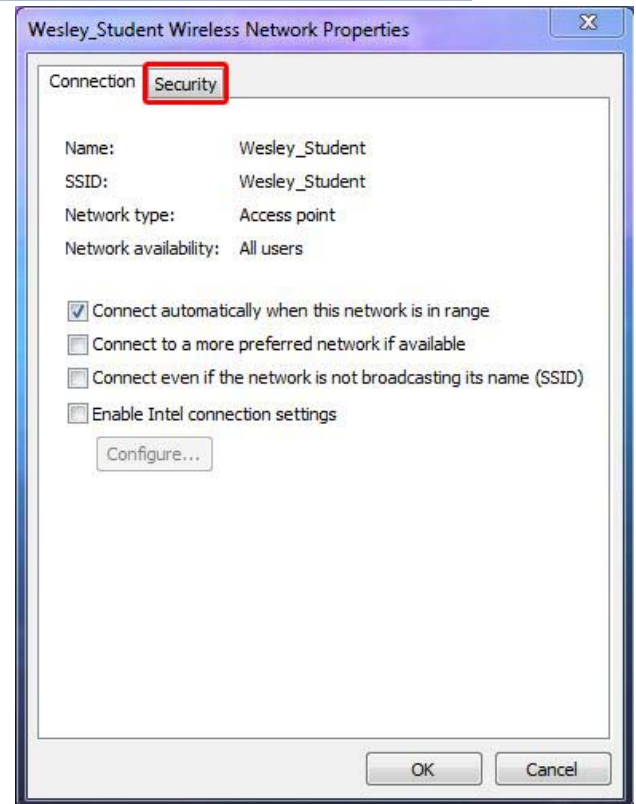
8. Configure settings to match exactly as the settings shown below. (Fig. 6)

**Fig. 6**

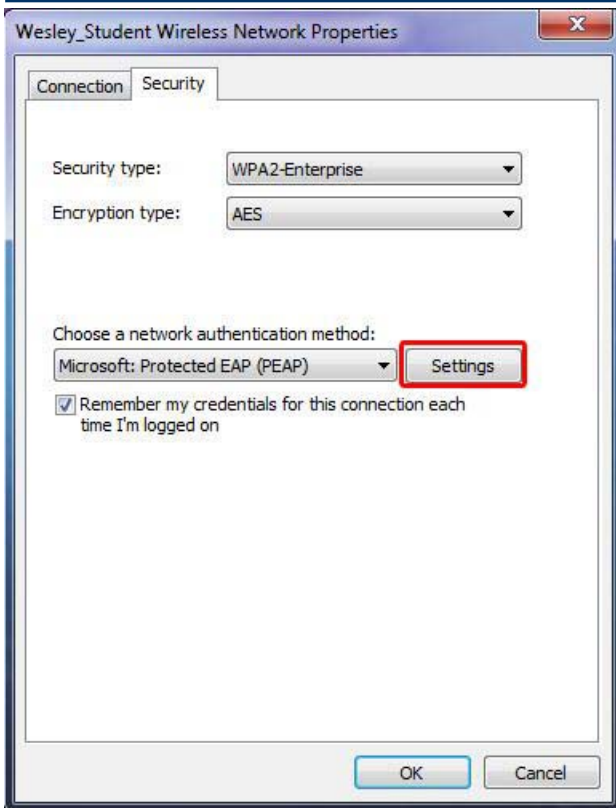
9. Click **"Next"**
10. Click "Change connection settings." (Fig. 7)

**Fig. 7**

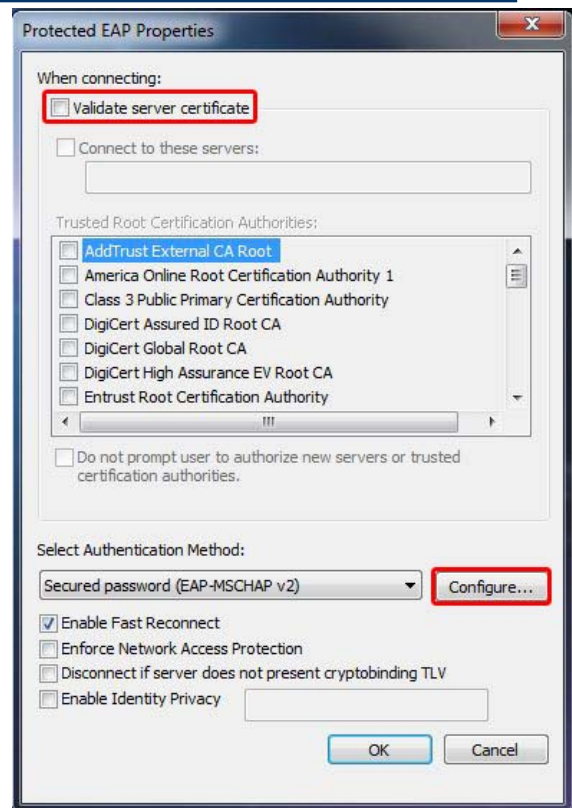
11. You should see a screen that looks like Fig. 8,  
click the "Security" tab.

**Fig. 8**

12. You should now see a screen that looks like Fig. 9 below, click the "Settings" button.

**Fig. 9**

13. Once in this screen (Fig. 10), uncheck "Validate server certificate".
14. Click "Configure" button.

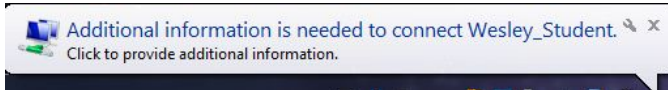
**Fig. 10**

15. Uncheck the box that says, "Automatically use my Windows logon name and password (and domain if any)." (Fig. 11)

**Fig. 11**

16. Click "OK" three times to get back to Fig. 7. Click "Close".

17. You might see a pop-up bubble that looks like Fig. 12, if so, click on it.



**Fig. 12**

18. Finally you will be prompted to enter your Wesley credentials like Fig. 13 below. Enter your credentials in the following format:  
Username: <Windows PC Logon Name>  
Password: <Windows PC Password>  
Logon domain: **Wesley**



**Fig. 13**

19. You should now be connected to Wesley\_FS secure wireless.