

### Windows 7: WPA2 Wireless Network Setup for Students

#### Create a New Wireless Network

1. Make sure your wireless adapter is enabled on your laptop.
2. Click the "Start" menu, and select "Control Panel."
3. Click on the "Network and Internet".
4. Click on Network and Sharing Center. (Fig. 1)



Fig. 1

5. Click "Manage wireless networks" (located on the left side of the window). (Fig. 2)

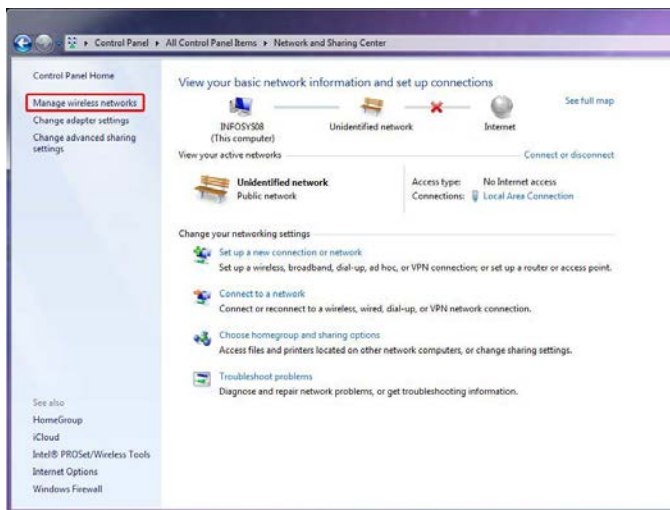


Fig. 2

6. Click "Add." (Fig. 3)

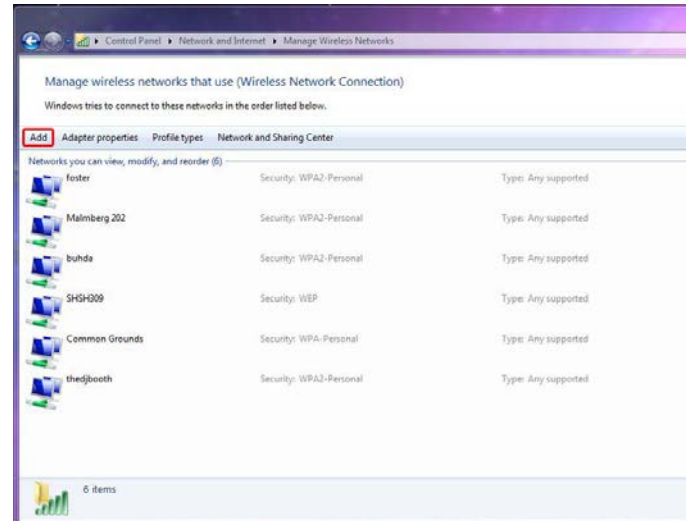


Fig. 3

7. Select "Manually create a network profile." (Fig. 4)

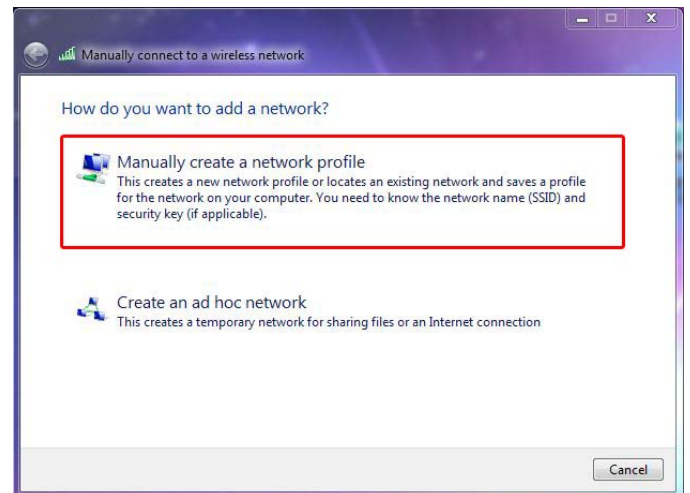
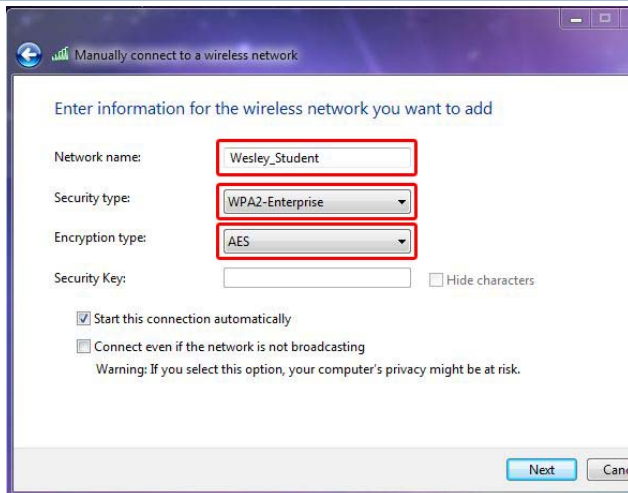
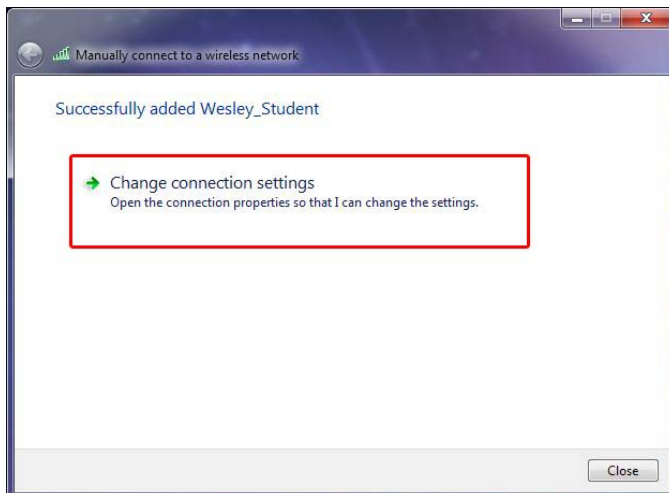


Fig. 4

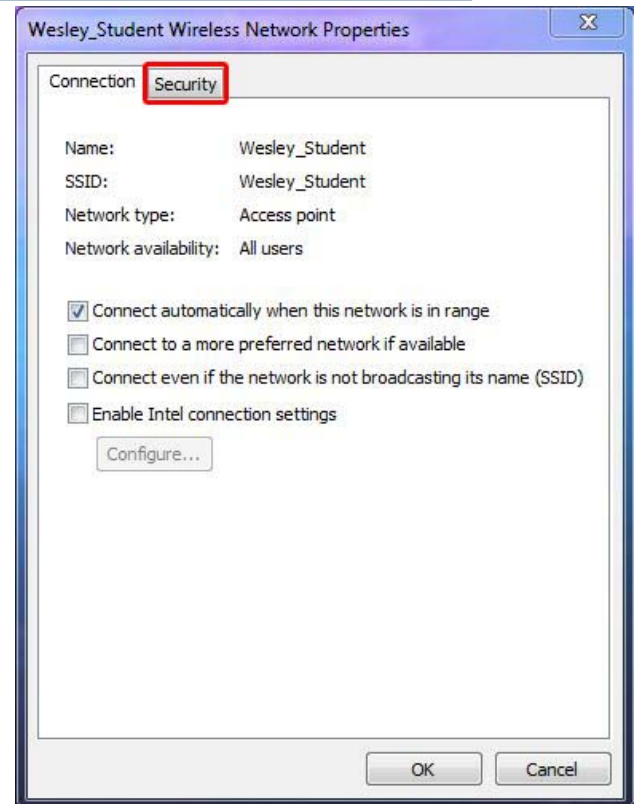
8. Configure settings to match exactly as the settings shown below. (Fig. 5)

**Fig. 5**

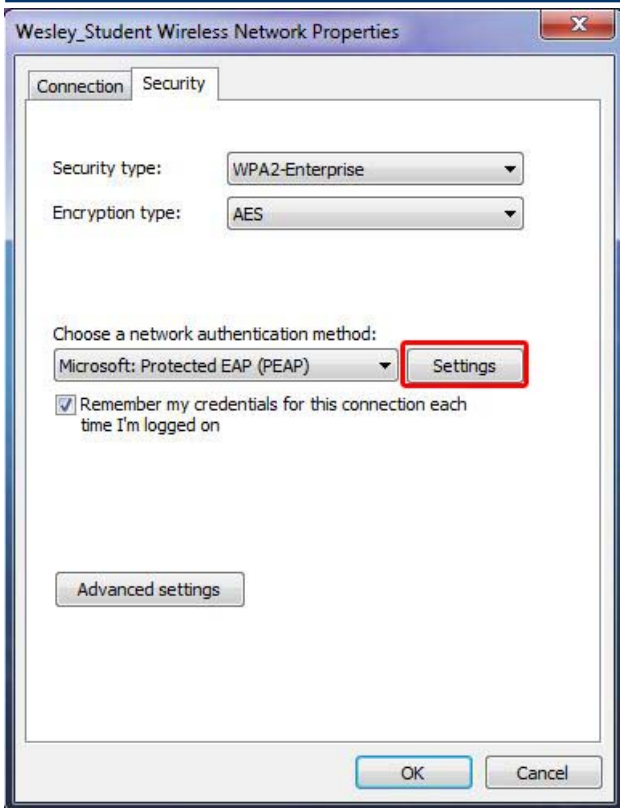
9. Click **"Next"**
10. Click "Change connection settings." (Fig. 6)

**Fig. 6**

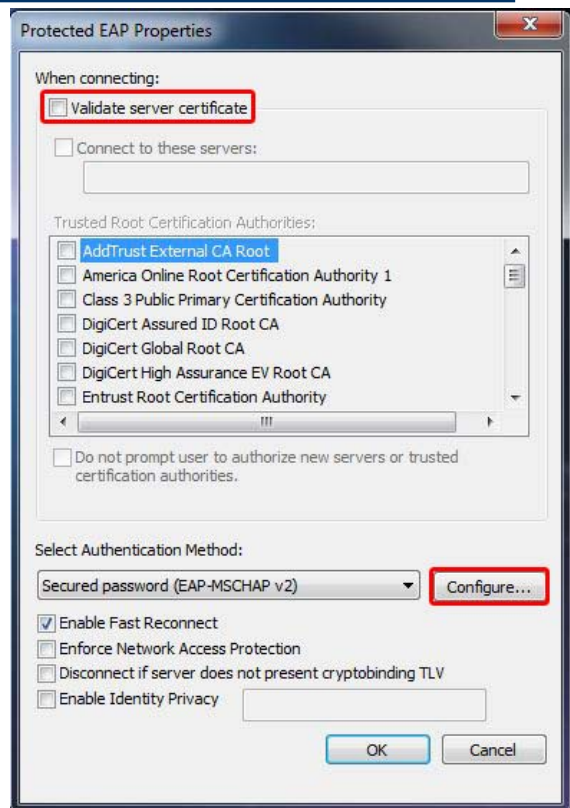
11. You should see a screen that looks like Fig. 7,  
click the "Security" tab.

**Fig. 7**

12. You should now see a screen that looks like Fig. 8 below, click the "Settings" button.

**Fig. 8**

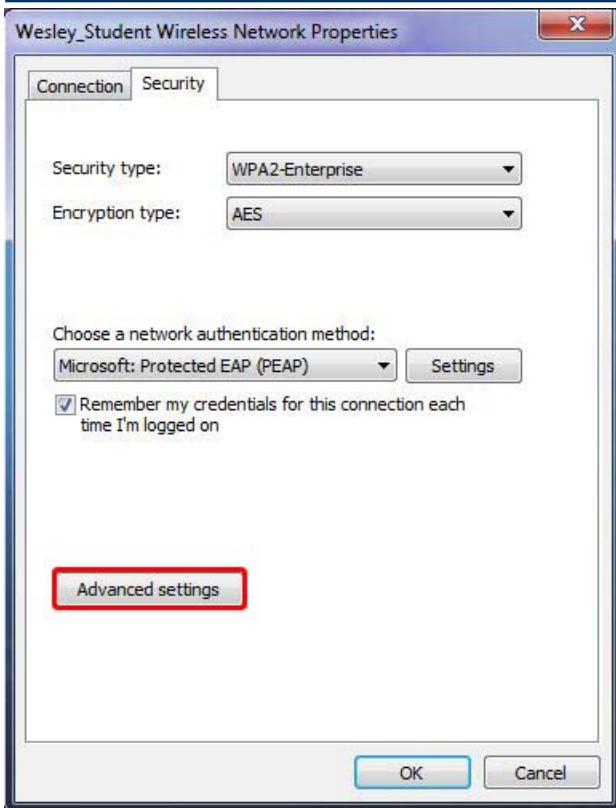
13. Once in this screen (Fig. 9), uncheck "Validate server certificate".
14. Click "Configure" button.

**Fig. 9**

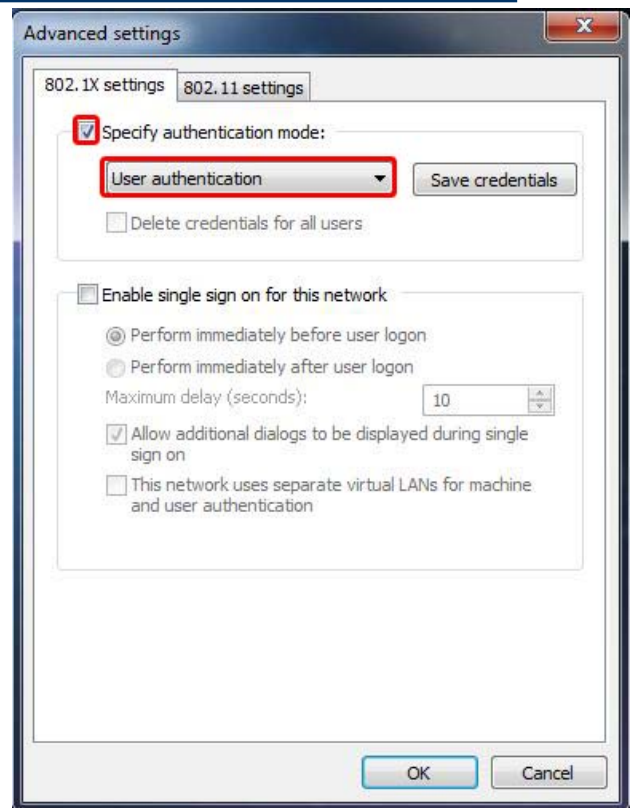
15. **Uncheck** the box that says, "Automatically use my Windows logon name and password (and domain if any)." (Fig. 10)

**Fig. 10**

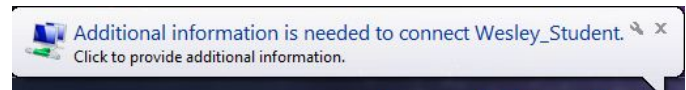
16. Click "OK" twice to get back to Fig. 8. Click "Advanced Settings as shown in Fig. 11.

**Fig. 11**

17. Once at this screen click the check mark next to "Specify authentication mode" and use the drop-down list to select "User authentication" as shown in Fig. 12.

**Fig. 12**

18. Click "OK" until it takes you back to the screen that looks like Fig. 6 and click "Close".
19. You might see a pop-up bubble that looks like Fig. 13, if so, click on it.

**Fig. 13**

20. Finally you will be prompted to enter your Wesley credentials like Fig. 14 below. Enter your credentials in the following format:  
Username: firstname.lastname  
Password: first initial of first name, first initial of last name and your Student ID number (no spaces)  
Example:  
Username: john.smith  
Password: js1234567



**Fig. 14**

21. You should now be connected to Wesley\_Student secure wireless.