

Windows 7: WPA2 Wireless Network Setup for Faculty & Staff

Connect to Wesley_FS

1. Make sure your wireless adapter is enabled on your laptop.
2. In the system tray you should see something similar to the icon in Fig. 1 that indicates wireless networks are available.



Fig. 1

3. Next, click on the icon to bring up the list of detected wireless networks in your area as shown in Fig. 2. (Your actual list may vary.)

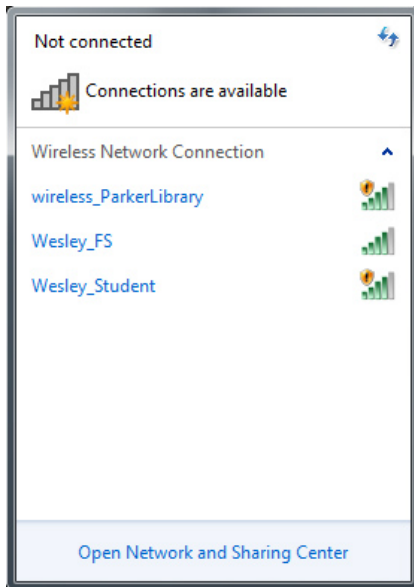


Fig. 2

4. Select the "Wesley_FS" wireless network.
5. You will now be prompted to enter your Wesley credentials as shown in Fig. 3.



Fig. 3

6. After you enter your credentials you will see the alert message shown in Fig. 4. Click Connect.

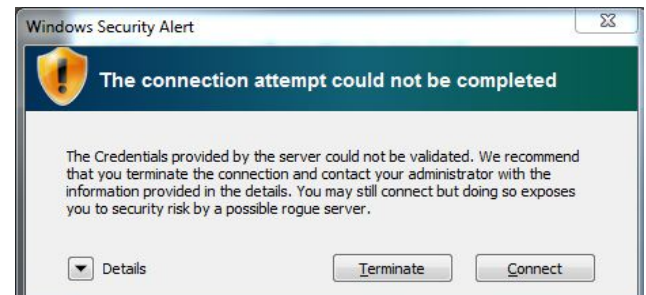


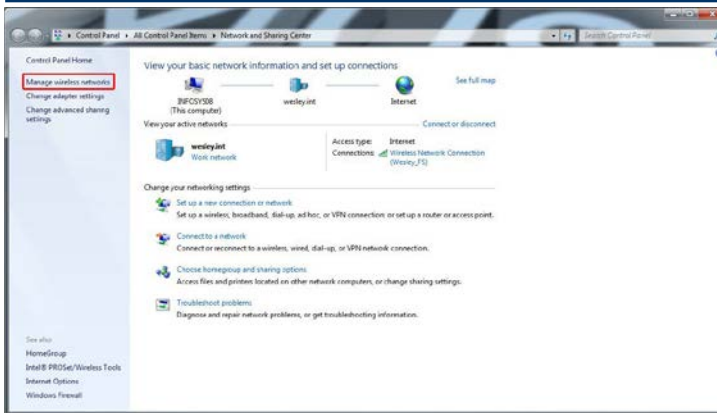
Fig. 4

7. You are now connected!

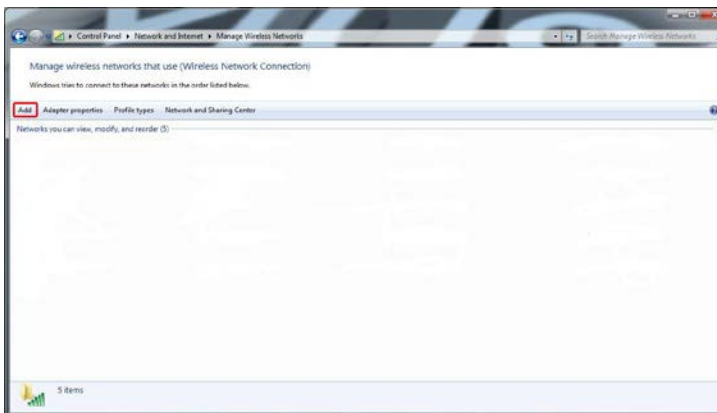
***NOTE – In some cases the above instructions do not work with all systems. If this is the case, proceed with the next set of instructions.**

Create a New Wireless Network

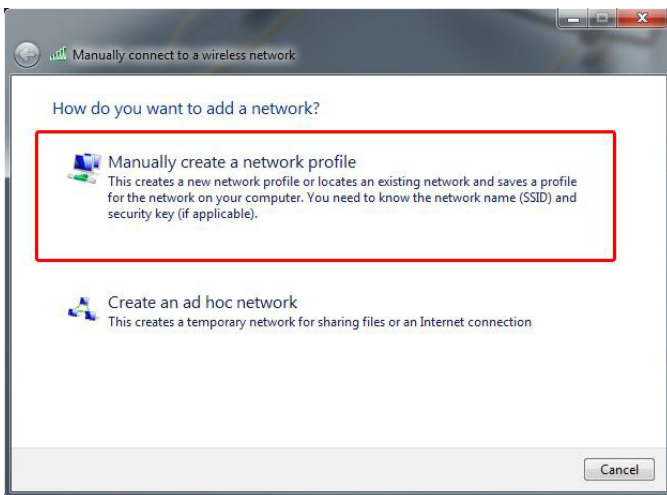
1. Click the "Start" menu, and select "Control Panel."
2. Click on "Network and Sharing Center," and select "Manage wireless networks" (located on the left side of the window).



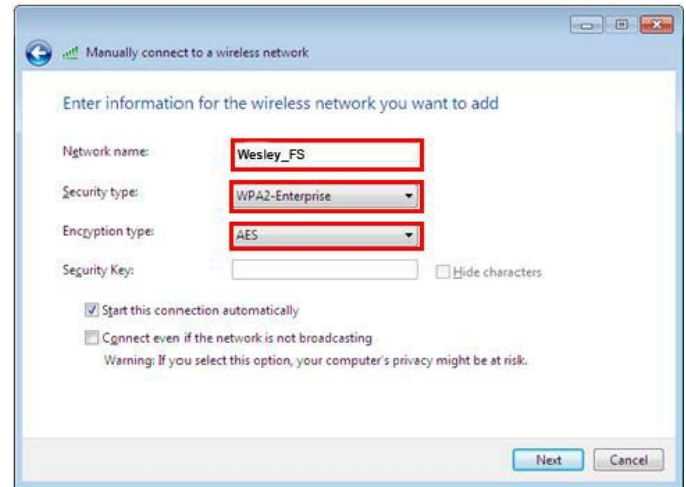
3. Click "Add."



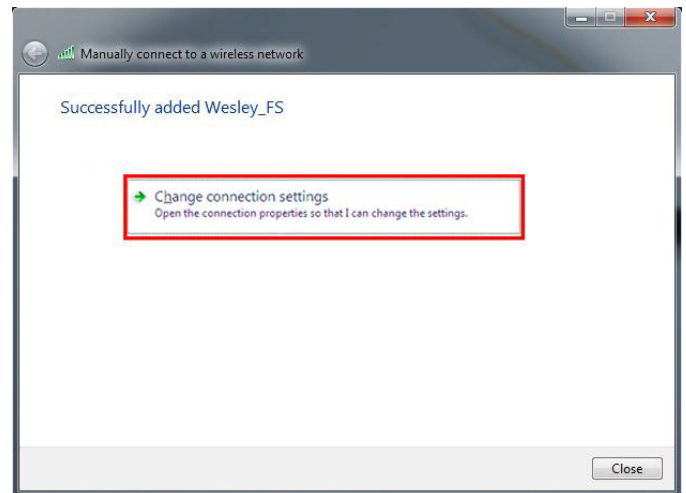
4. Select "Manually create a network profile."



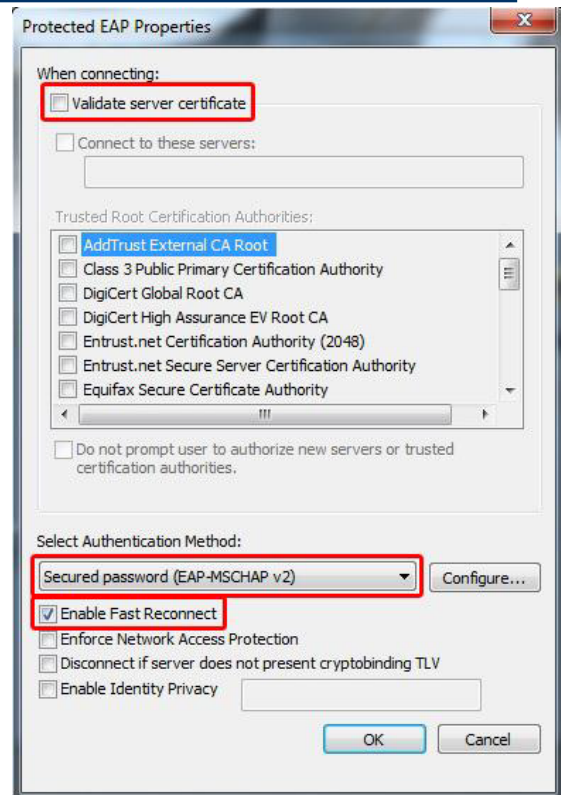
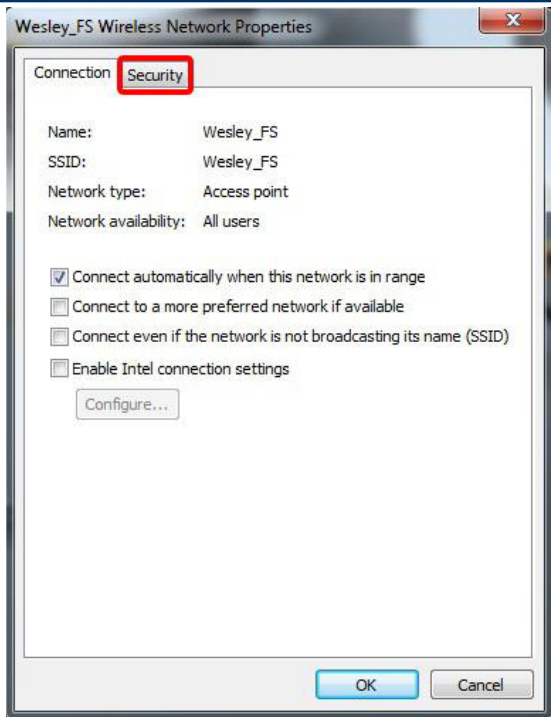
5. Configure settings to match the settings shown below, and click "Next."



6. Click on "Change connection settings."

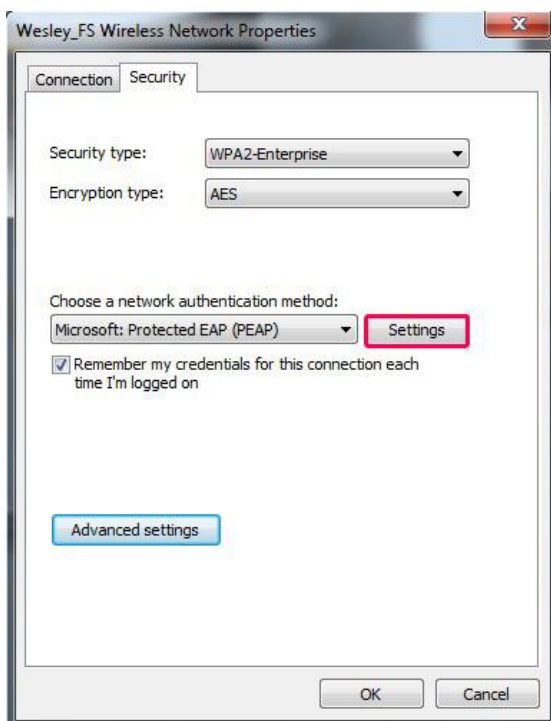


7. Click on the "Security" tab.



Enter Network Settings

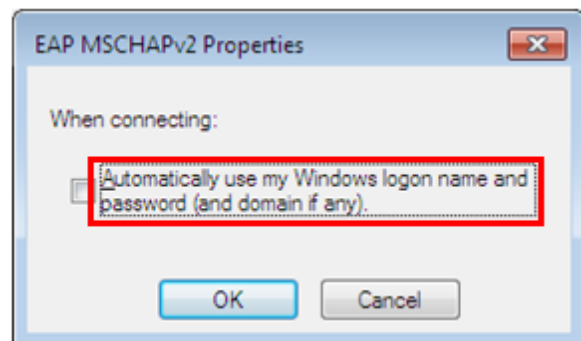
8. Click the "Settings" button



9. Uncheck "Validate server certificate."

10. Under "Select Authentication Method," check "Secured password (EAP-MSCHAP v2)."

11. Click "Configure" button.



-
12. Uncheck the box that says, "Automatically use my Windows logon name and password (and domain if any)."

Log In

13. Click on the wireless connection icon at the bottom right corner.
14. Click on "Wesley_FS," then click "Connect."
15. Enter your Wesley Username and Password, and click "OK."
16. You should now be connected to Wesley_FS secure wireless.