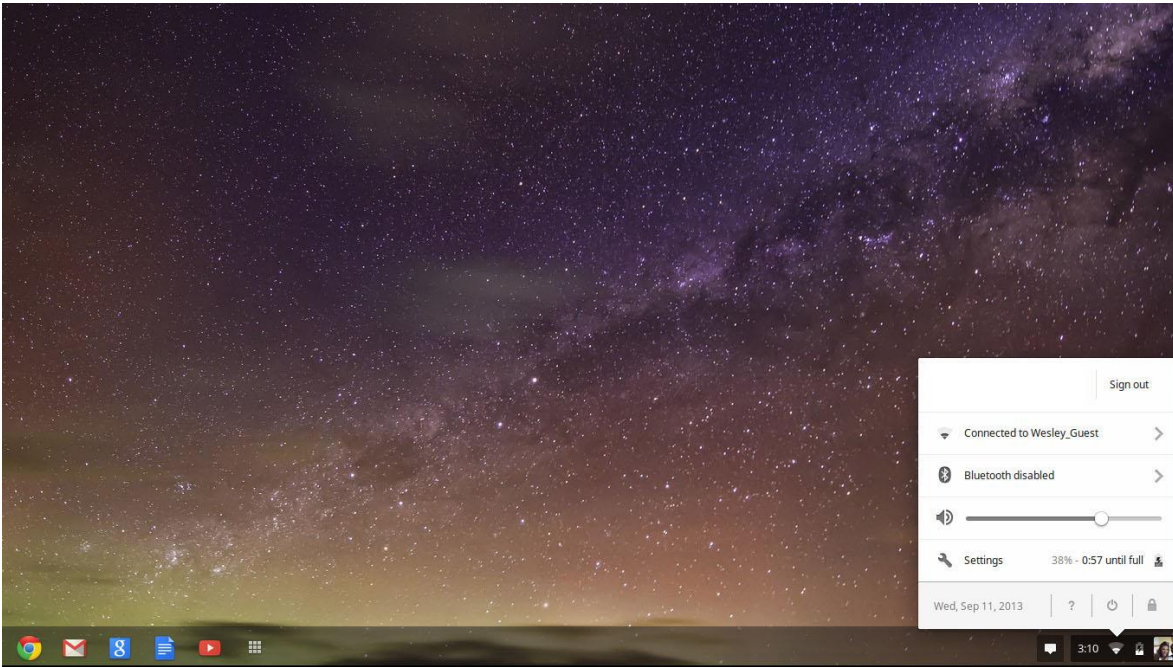
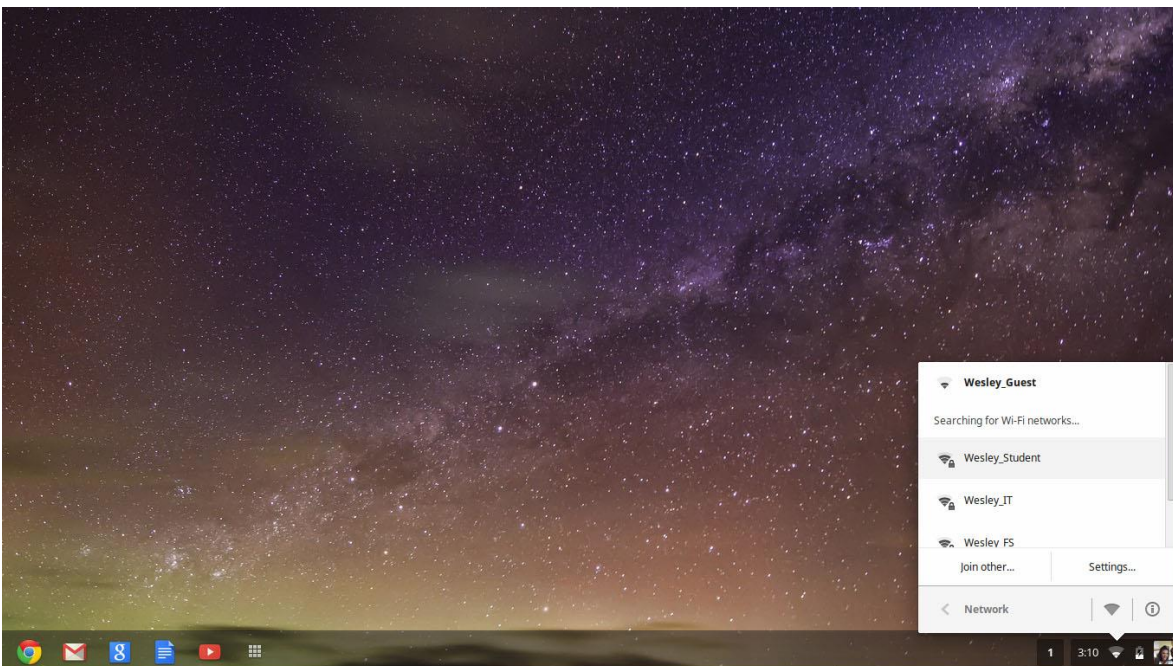


Chromebook: WPA2 Wireless Network Setup for Students

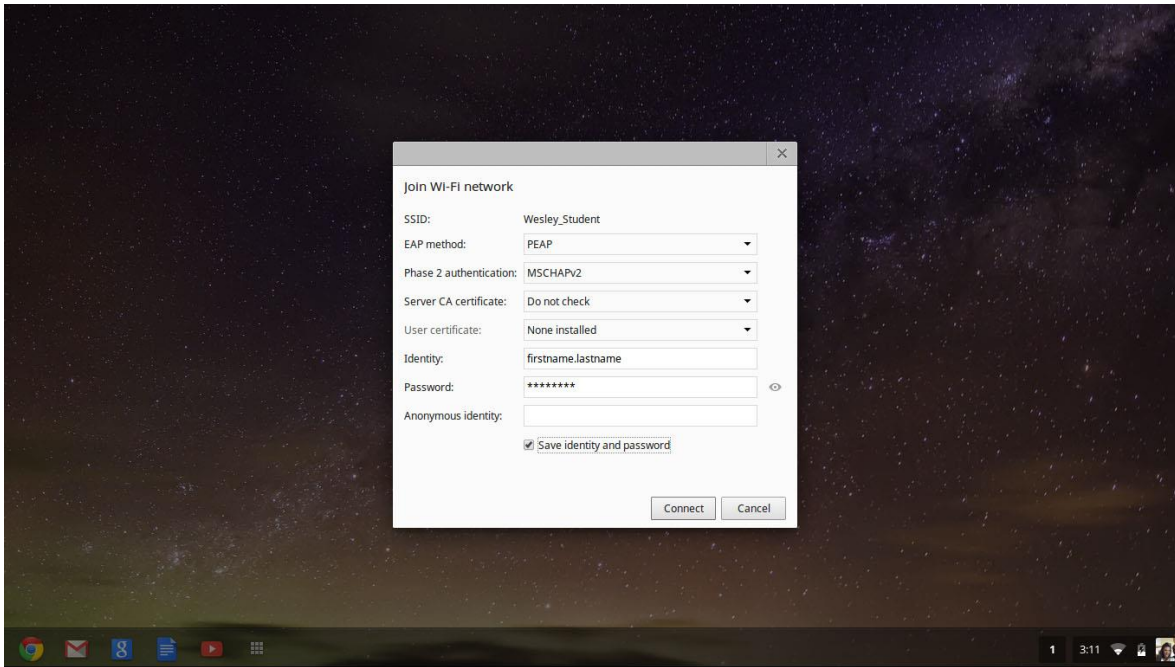
1. At the Chromebook main screen click the WiFi symbol in the bottom right corner.



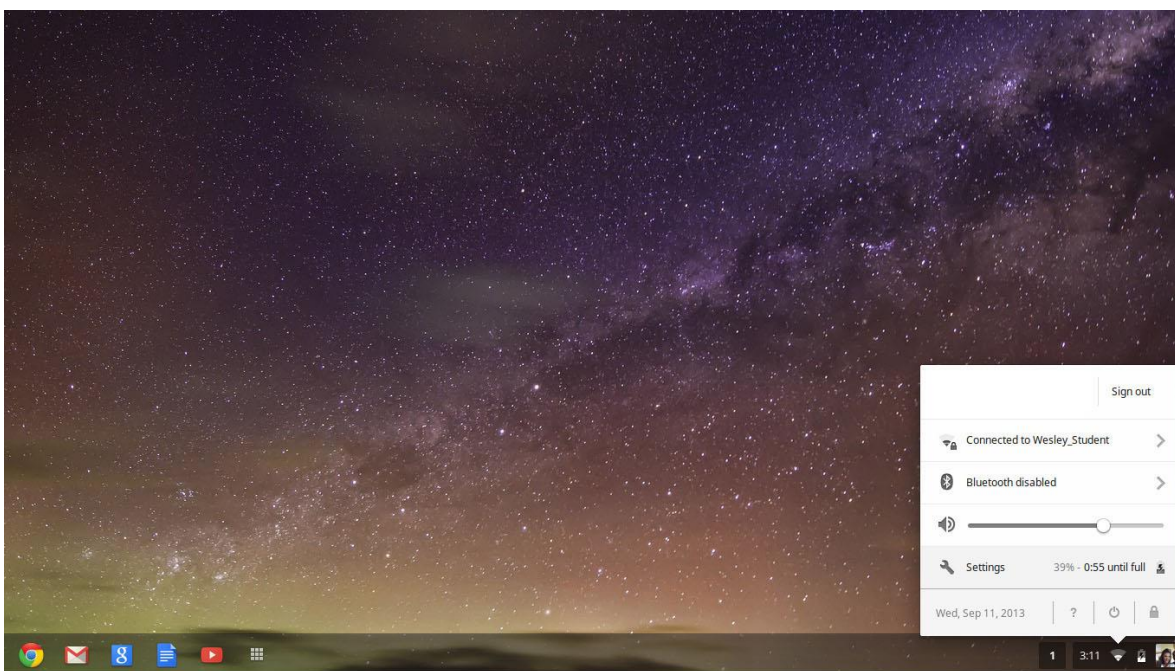
2. Click Wesley_Student WiFi network.



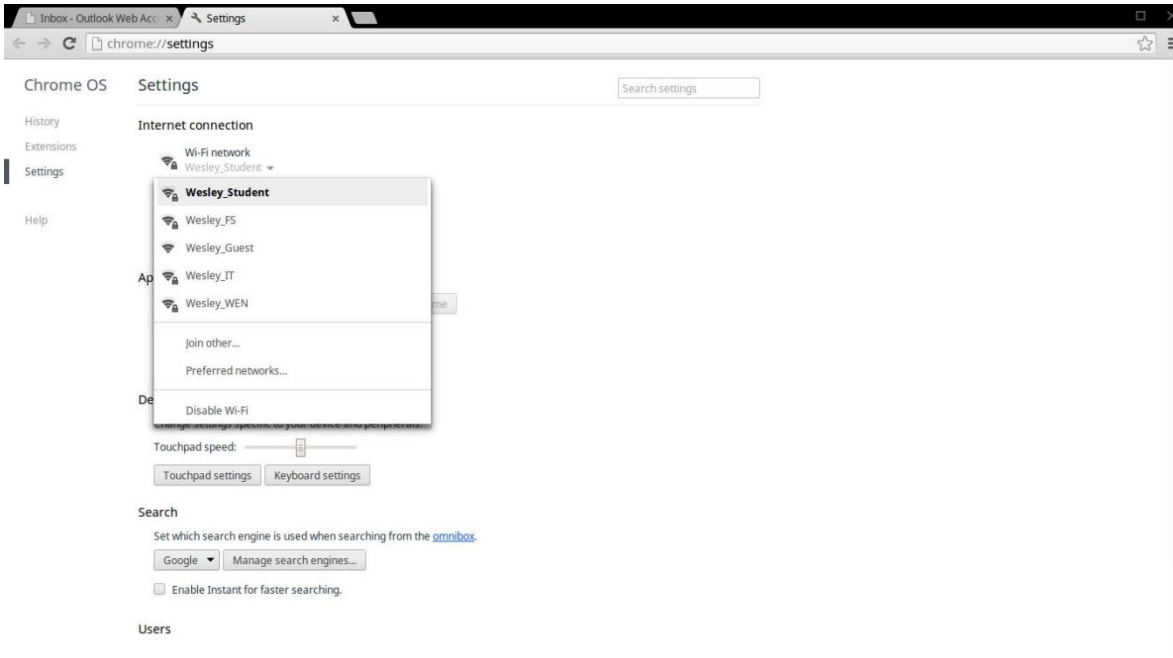
3. Select the encryption and authentication methods and username and password as shown in the screenshot below.



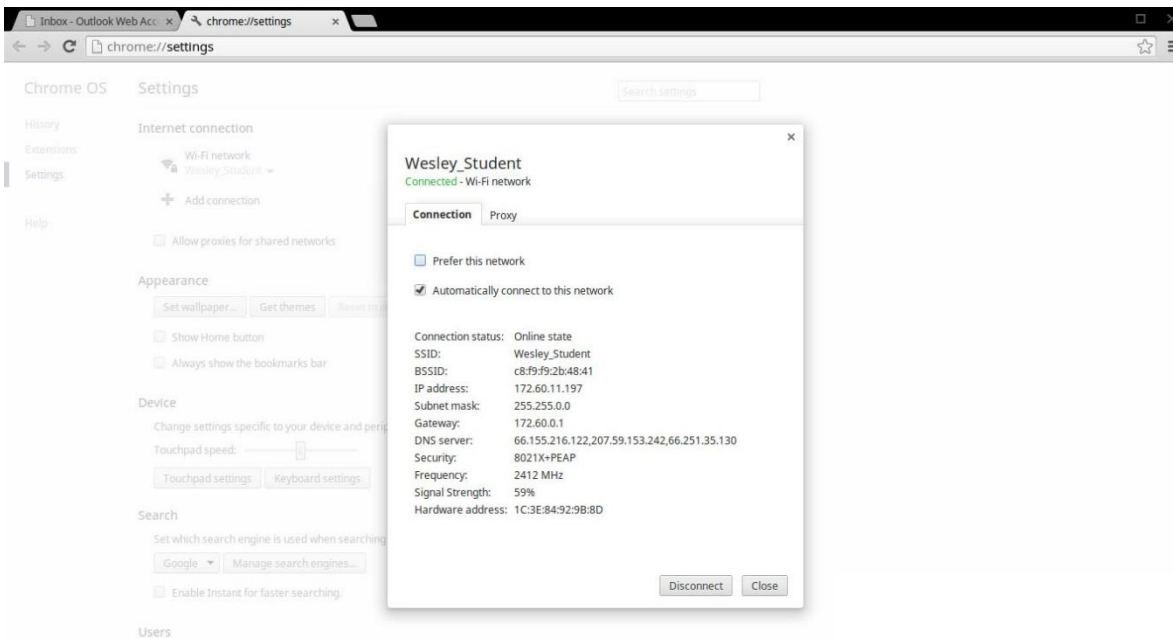
4. Verify that you are connected to Wesley_Student WiFi network by clicking on the WiFi symbol. Click Settings to finish setting up the WiFi for Wesley_Student.



5. Click Wesley_Student under Wi-Fi network.



6. Put a check mark in "Automatically connect to this network".



7. Finished.